

# QUICK INSTALLATION GUIDE

## Hardware Installation

### Step 1.

Place the Card-Reader into a free 3,5" slot of your PC case.

### Step 2.

Fasten the screws on both sides of the card reader and the frame of your case.

### Step 3.

Connect the USB cables to your motherboard (or add-on cards). Consult your motherboard manual.

### Step 4.

Make sure that all pins of your USB cable are connected with the correct pins on your motherboard.

## Connection of the USB-Cable

Farbe / Color	Signal
Rot / Red	VCC+
Weiß / White	DATA -
Grün / Green	DATA +
Schwarz / Black	VCC-[GND]

### **Caution !**

Please don't mix up [VCC+] and [GND], otherwise you will damage your hardware.

# QUICK INSTALLATION GUIDE

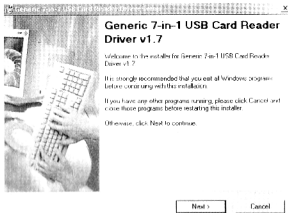
## Installation Driver

WINDOWS XP/ME/2000(SP3)

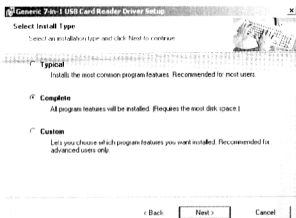
Windows XP/ME/2000(SP3) users DO NOT need to install drivers.  
Windows XP/ME/2000(SP3) will automatically provide a default USB device driver for the card reader.

WINDOWS 98SE/2000

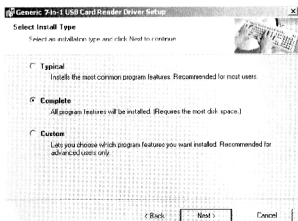
1. Please put the CD driver into the CD-ROM.  
Execute "SETUP.EXE" for installation



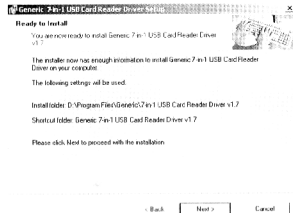
2. Choose "Typical", then click "Next".



3. Choose an installation path, then click "Next"



4. You are asked to double-check the installation settings. If they are ok, press "Next".



5. After the installation is finished, you are requested to restart the computer.

